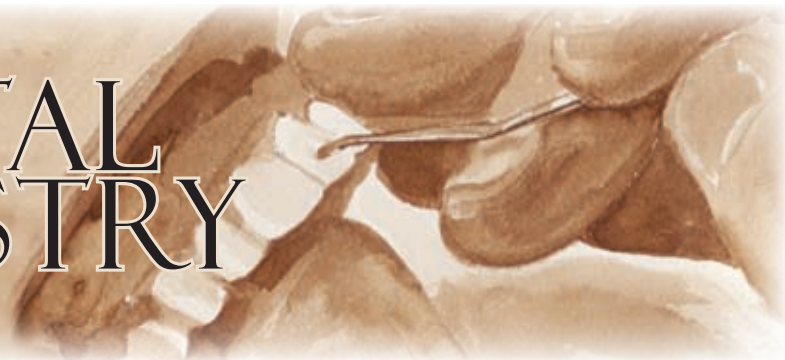




DENTAL ARTISTRY



Fall 2007

From Dr. Reid

In Remembrance ... of 9/11



*Captain Victor J. Saracini
United #175*

August 29, 1950 - September 11, 2001

In August, my sister, Jeanne, from Pennsylvania, came to visit and discuss plans for our father's 80th birthday party in December. She was as excited about the celebration as introducing me to her neighbors and best friends, the Saracini's.

She had a special passion as she spoke of Victor. She said "He's a Viet-Nam veteran like you and has the world's greatest sense of humor. You'll absolutely love him"

That meeting never occurred. Victor's aircraft was hijacked and ruthlessly flown into the second tower of the World Trade Center.

Jeanne was right. I love him.

Further info www.victorsaracini.com

Software Animations Gain World Wide Acclaim

**Truckee resident and Dr. Reid Animate the
Stomatognathic System**

There is a major void in the traditional dental education that has a profound impact on the health and success of dental restorations. That is the relationship between the teeth, gums, jawbones, muscles and TMJ or jaw joint. - The Stomatognathic system; simply stated, "the bite". When a bite is imperfect it causes havoc referred to as Occlusal disease.

Twenty seven years ago, I started a study of this system. I explored all of the current approaches to resolving bite problems. I found my answer in 1992 by studying with Dr. Peter Dawson, www.dawsoncenter.com, perhaps the most influential clinician in the history of dentistry.

Now clear in my mind, I needed a tool to communicate to clients how bite problems affect them. Along with Doug Brown of Dynamic thought, we developed BiteFX software, www.bitefx.com, which is a series of 3-D animations that depict the unique nature of both a proper, stable bite and a destructive one.

The Dawson Center, private and public Universities and private sector teaching institutions are now using BiteFx to enhance the understanding and rational of creating a stable healthy bite.

For a more complete treatise of the nature of bite problems read http://www.bitefx.com/news_01.php



Dr. Reid and Doug Brown: inventors of BiteFX

Contact us at (530) 587-9560 or bitefx@yahoo.com

Beautiful Smiles Are Functional And Protective Too!

A case study of the importance of properly shaped front teeth

Below are excerpts from an article, "Presenting Occlusal Disease in 3-D, written by Dr. Reid in Dec 2006 Dentistry Today, circulation 160,000.

When a bite isn't working correctly, there are a multitude of both signs and symptoms that may be present:

- Facial muscle soreness
- headaches
- clicking
- popping jaws
- teeth grinding, loose
- sensitive teeth
- receding gums
- bone loss around roots
- tooth fracture

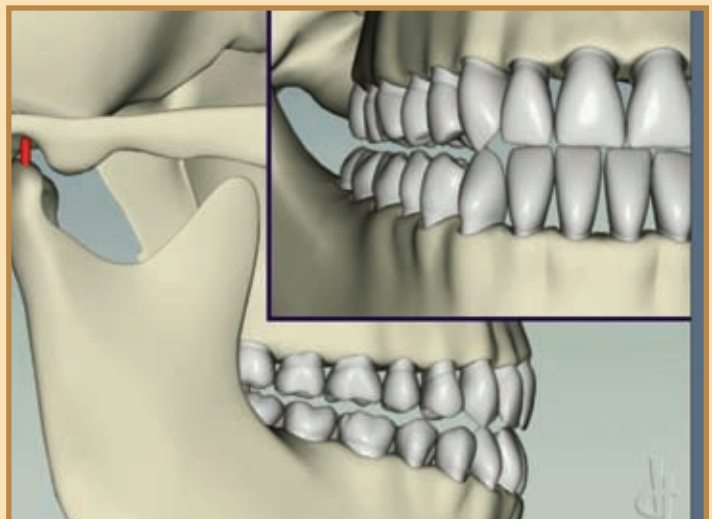


Notice the flattened teeth. Many were loose and sensitive.

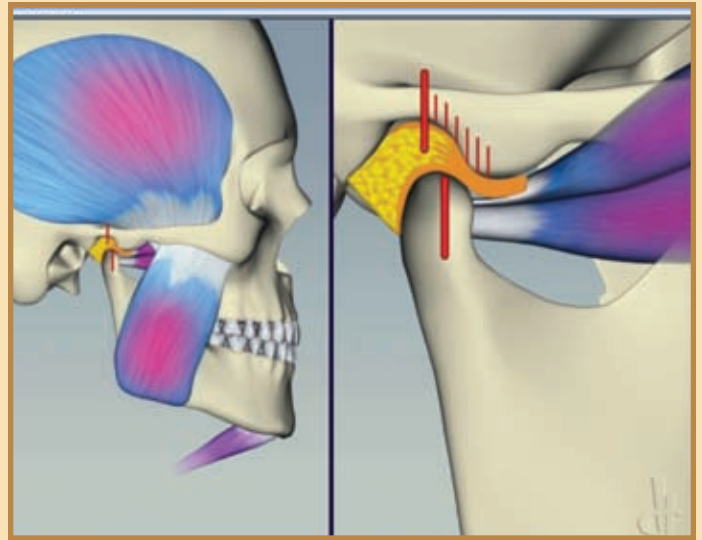


Notice the worn flat canine and how the back teeth touch.

BiteFX animation shows how only the canines touch when the jaw moves sideways and the back teeth come apart (protected from wearing, sensitivity, loosening).



Dr. Reid artistically "mocks up" proper tooth shape with Composite Materials.



Muscle Hyperactivity

Tooth grinding and wear is due to improper tooth contact.



Using conservative and beautiful porcelain veneers, the upper 8 teeth only were restored to both beauty and normal function. Note how the canines have points and how the back teeth are apart.



After

The completed smile, beautiful, comfortable and very protective.

If you would like an analysis of your smile for both beauty and function, please contact Dr. Reid.



My beautiful wife Marilyn

Jamie lives in Hawaii



Michael lives in Denver



A Reason To Smile

In our home, this time of year conjures thoughts of turning seasons, hot cider, family gatherings and lots of memories. I'm especially thankful for my wife and five wonderful children.

They're spread all over the globe but this time of year always draws them home. I thank God for all of them and you can see I have a great reason to smile.

Katie lives in Boise



*Leah (left) lives in Southern California
Natalie (right) lives in San Francisco*

officeinformation

Donald Reid DDS, FICOI
Dental Artistry
10330 Donner Pass Road
Suite A
Truckee, CA 96161

Office Hours
Mon-Thu 8:00 am – 5:00 pm

Contact Information
Office (530) 587-9560
Fax (530) 582-4507
Email bitefx@yahoo.com
Web site www.tahoedentalartistry.com

*Dr. Reid can be contacted
24/7 for emergencies at:
(530) 412-0616*



DONALD REID DDS
DENTAL ARTISTRY

Walking The Talk Being earth-friendly

We are extremely proud and excited to announce that our newsletter is sporting a new logo in the lower left corner of page 4. It's the FSC logo. FSC stands for the *Forest Stewardship Council* which is an international organization that promotes environmentally appropriate, socially beneficial, and economically viable management of the world's forests.

The paper for our newsletters – for every future publication – meets FSC principles and criteria. Each piece of paper can be traced back to the *forest from which it came* – ensuring that its origin is a responsibly managed forest! WOW!

We are extremely proud of the fact that we are using this earth-friendly product! It's just one more thing that we're doing to help the world in which we all live.

For more information, please visit www.fsc.org.

**Famous
Quote**

'If you don't lie, you won't have to remember so much'
–Abe Lincoln